

\$539,000 - 166 Breezeway Court New Smyrna Beach

MLS® #1040774

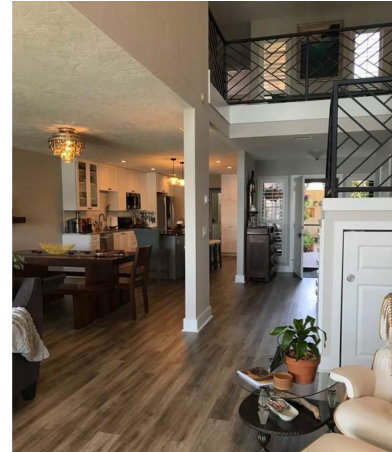
\$539,000

2 Bedroom, 3.00 Bathroom, 1,726 sqft

Residential on 0 Acres

Venetian Villas, New Smyrna Beach, FL

Beautifully MODERNIZED WATERFRONT TOWNHOME in the Middle of New Smyrna Beach! TURN KEY and ready for move in! This home has tons of natural light which flows through the cool open design plan. Sit in your modern kitchen for breakfast and have friends over to enjoy the views in the EXPANSIVE livingroom under high cathedral ceilings. An architectural staircase with a spacious landing leads you to the bedrooms upstairs. Redone bathrooms, both have walk in showers and beautiful tile. Plenty of storage space around the house. First floor has an extra large bonus room with beautiful built in storage, a Murphy bed, skylights and privacy blinds. A lovely secluded breezeway leads to the OVERSIZED garage which has been fitted with extra storage and a work area for the gardening enthusiast. The home is conveniently located on the North Causeway, close to everything! Canal Street, restaurants, Saturday Farmers Markets, Art Festivals in one direction, Marine Discovery Center around the Corner, and Flagler Avenue and the ocean just across the North Bridge! Deeded Boat Slip right out front!!



Built in 1993

Essential Information

MLS® #

1040774

Price	\$539,000
Bedrooms	2
Bathrooms	3.00
Full Baths	2
Half Baths	1
Square Footage	1,726
Acres	0.00
Year Built	1993
Type	Residential
Sub-Type	Townhome
Status	Active

Community Information

Address	166 Breezeway Court
Area	Bchsd North:N of Flagler Ave
Subdivision	Venetian Villas
City	New Smyrna Beach
County	Volusia
State	FL
Zip Code	32169

Amenities

Amenities	Clubhouse, Common Grounds, Maintenance Grounds, Pool
Parking	Off Street, Oversized, Workshop in Garage
# of Garages	1
Garages	One Car Garage
View	Water
Is Waterfront	Yes
Waterfront	Bay Access, Dock Access, Intracoastal Access, Lagoon, Seawall

Interior

Interior Features	Book Cases, Fireplace, Kitchen Island, Living/Dining Room, Loft, Open Floorplan, Other, Skylights
Appliances	Dishwasher, Disposal, Range, Refrigerator
Heating	Central, Fireplace(s), Wood
Cooling	Ceiling Fan(s), Central Air
Fireplace	Yes
# of Stories	2
Stories	Two

Exterior

Exterior Features	Balcony, Fence, Patio, Porch
Lot Description	2930
Roof	Asphalt
Construction	Frame

Listing Details

Listing Office	Keyes Company
----------------	---------------